

## Commercial Opportunities

### Image Viewing Control (ref: 406)

#### Overview

The development of this invention has been led by the medical physics team at Leeds Teaching Hospitals NHS Trust.

The invention (patent applied for) is a software security interface to prevent medical image viewing software from being run unless the computer display is operating at a predetermined quality.

#### The Problem

Soft copy display is increasing in UK hospitals due to the expansion of digital imaging systems and PACS (picture archiving and communication system) as a method for storing and displaying diagnostic images.

Images can now be viewed on a range of display systems, from dedicated multi-monitor workstations to desktop PCs and home computers using web browser software. Although the display is the last part of an expensive imaging chain, it is often overlooked in routine quality assurance (QA) programmes. A substandard or poorly adjusted monitor may cause vital information in an image to be missed, compromising the level of care provided to the patient.

It is therefore accepted that routine QA is required to maintain optimal display and therefore minimise misdiagnosis due to sub-standard digital image display.

However, providing this service to the potentially large numbers of disparate systems would be cost prohibitive. A hospital could have hundreds of monitors capable of viewing medical images with PACS web based viewing, therefore this level of QA is not possible at present.

Another problem is the difficulty of preventing the display settings from being changed between QA periods.

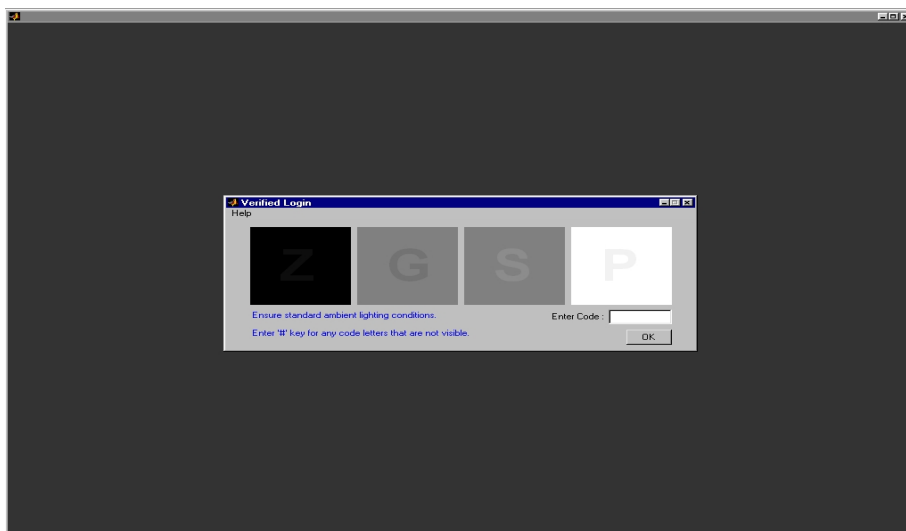
#### The Solution

This invention acts as a portal to launching the image viewing software and provides a check to ensure optimal display performance before viewing software can be run. The invention is not only sensitive to sub-optimal or poorly set-up displays, but also to detrimental changes in ambient light conditions.

There is no other system that does this without intensive and expensive QA and therefore this invention is expected to be extremely popular in hospitals with PACS as it ensures a minimum level of clinical audit and governance with respect to soft copy viewing.

#### The Next Steps

A patent has been applied for. Medipex is seeking a commercial partner to develop a market ready product.



Verified login prompt and background window