



**Medipex Annual Report
2008/09**

Chairman's Forward 2008-09

I am very pleased to write this Chairman's forward and in looking back over the previous 12 months it is with great satisfaction that there has been another solid year's performance from Medipex. The strategic focus on innovation in the NHS as outlined in the Darzi review (High Quality Care for All) has seen major emphasis on innovation activities and many new initiatives and organisations are now emerging on to the landscape. By constantly reviewing its activities against those taking place elsewhere, regionally and nationally Medipex has continued to thrive and deliver a strong performance on behalf of its NHS members. Active engagement with relevant new initiatives originating from within DH such as Devices for Dignity HTC and both CLAHRC's (South Yorkshire CLAHRC and Leeds York Bradford Research Alliance) has ensured Medipex's continued ability to deliver value to stakeholders.

Medipex's role as a core partner within the recently completed White Rose Health partnership proved an excellent illustration of the benefits that are to be gained in opening up innovation partnerships between NHS, Universities, and industry. Particularly noteworthy is the work Medipex undertook on the NHS procurement process, which has led to seminars and discussions with industry.

Medipex NHS Innovation competition awards event continues to grow and graphically illustrates the commitment of NHS staff from across Yorkshire and Humber's National Health Service to developing innovations to meet the healthcare needs of patients. This enthusiasm ensured Medipex met its core objectives of identifying and commercialising innovations, the continued growth of the IP pipeline and delivery of the metrics set by the board on external income, deals and membership. These endeavours were again given regional recognition, at the highest level when Medipex, won the Institute of Directors sponsored 'Innovation Catalyst' award in this year's Yorkshire Forward Innovate '09 Awards.

Sustaining the success of Medipex as an organization that supports front line organizations in stimulating innovation continues to be important for the region. The transfer, with effect from 1st April 2009 of commissioning responsibility for the Hubs from the NHS Institute for Innovation and Improvement to the SHAs is a change that has the potential to positively impact upon Medipex's ability to contribute to the region's wider innovation and continuous improvement agenda.

Over the coming year, under guidance from the Board of Directors and the support of our member trusts across Yorkshire and Humber I look forward, to helping Medipex enhance its contribution to innovation and have every confidence that Medipex will ably meet the challenges posed by the changing innovation landscape.

As Chairman, it remains a privilege to lead Medipex, an activity that continues to be both enjoyable and challenging. Strong Board support, throughout the year with sub-committees on Finance, Project Appraisal, PR/Communications meeting regularly to provide strategic guidance to the executive has ensured good governance for Medipex Ltd.

Lastly I extend my thanks to the Company management and staff for their excellent achievements over the year and their continued endeavours in helping NHS staff from across the region make a contribution to the competitiveness and prosperity of the region.

Professor Gareth Lloyd-Jones
Chairman

Executive Summary

Welcome to our fifth annual report and I am very pleased to announce Medipex has continued to deliver very impressive results on behalf of our NHS members.

Over the last year:

- 142 ideas were sent to us for new health related innovations
- 94 ideas added to our database and were actively assessed
- Completed 10 commercial deals on behalf of our members
- Supported 5 applications for R&D funds (NIHR, TSB)
- Delivered 15 training workshops on IP to NHS staff and
- Spoken to over 350 companies about NHS IP pipeline

I would also like to pay tribute to the Medipex team who continue to deliver an impressive service for our members. During the year we were very pleased to receive the Yorkshire Forward Innovation Catalyst award which recognizes our role in successfully contributing to the innovation agenda. This is the third independent accolade Medipex has won in the last three years and is a fantastic achievement from a standing start in 2004 and is entirely due to our staff and the support we get from our board and advisors.

We have set up a wholly owned subsidiary company, MPX Developments Ltd, in order to more effectively manage our involvement in the spin out companies. MPX Developments will become the corporate director rather than individual Medipex staff which avoids the need to keep updating Companies House register of company directors which happens quite frequently during the start up phase. It also ensures that a consistent approach is adopted towards directors' responsibilities and adopts good governance practice.

During Dec 2008 we moved to our current office location at Thorpe Park which significantly improved transport links to our member sites around Yorkshire and has avoided the long commute in to Leeds city centre.

We were pleased to be awarded £250K grant from Yorkshire Forward to develop services for regional companies looking to become involved in healthcare innovation within the NHS. Dr Chris Herbert is the Regional Business Development Manager responsible for delivering this contract which, by the end of it, will have required Medipex to work with over 60 healthcare companies. We are required to demonstrate that our support will have made a direct impact on the company's bottom line. Typical activities include meetings with the relevant clinical expert, clinical trials of new products, advice on procurement, access to early stage risk money and collaborations with the NHS leading to the development of new products and services.

Throughout the year we have continued to build on our relationship with the Strategic Health Authority. Professor Sue Proctor now sits on the Medipex board, Mr Karl Milner has agreed to chair the PR and Marketing sub-committee and we have formally met to discuss and implement specific innovation activities such as supporting Healthy Ambitions the SHAs implementation plan in response to Darzi review and support for Health and Social Care Awards.

Looking forward to the challenges ahead we are adopting a more rigorous approach to maintaining the level and consistency of our service by registering for the nationally recognized Customer First accreditation. This will take approximately 12 months in order to pull together the necessary policies based on actual staff procedures and to collate evidence of the impact our operations have on our customers. IN the medium term we would envisage implementing an ISO 9001 quality standard which is an international benchmark of our approach and duty of care.

Calderdale Framework



Rachael Smith and Jayne Duffy with Richard Clark

The nationally acclaimed Calderdale Framework is a quality assurance framework that has been developed by Rachael Smith and Jayne Duffy at Calderdale and Huddersfield NHS Foundation Trust. The framework provides a systematic method for analysing services and managing delegation to support staff with skill mix review with patient care and safety being its focus. Once implemented it leads to the identification and development of task related competences which provide a comprehensive and robust training package for the support worker and ensures patients receive consistent, evidence based interventions.

The implementation of the framework in the rehabilitation directorate at the Trust has resulted in reductions in the directorate risk rating, patient wait times and cost per patient contact and an increase in the number of patients seen. The framework was a finalist in Medipex's 2008 Innovation Competition and has been highly commended in the 2008 Health Service Journal (HSJ) awards. A series of one-day workshops are now being rolled out throughout 2009 so that NHS staff from other organisations can learn about the Calderdale Framework and how their organisation can benefit from its implementation. Places can be booked on the workshops via the [ennovations website](#).

The DH funding Medipex receives (via NHSI) provided around 70% of our last year's activity with the balance funded through an external contract to the Government (DIUS) for PSRE 3 funds. This contract will come to an end in July 2009; however, we are pleased to announce the start of a 2 year PSRE 4 contract to the value of £600K which will provide much needed Proof of Concept funds as well as a direct contribution to expanding and strengthening our core activities. We have also continued to draw down a small but steadily increasing amount of direct external income arising from successful exploitation of the NHS IP and from consultancy services to other organisations involved in healthcare innovations.

Richard Clark
Chief Executive

Deal Flow/IP Pipeline

Since starting activities in 2004 Medipex has received 820 disclosures of which nearly 50% (375) were selected for further assessment and feasibility study (Stage 1). The majority of the ideas we couldn't take forward were either because they were not commercially exploitable or because there was insufficient information or inventor support to take them forward. At the end of the FY 2008/09 (March 2009) we had 66 active projects of which 28 was from previous years and 38 from this last year. We would anticipate around 50% to 75% of these will probably close mainly because the assessment done by Medipex shows them to be not commercially exploitable or occasionally as a result of external developments. Any projects we feel may have merit but are unable to take forward then we would usually provide advice and feedback.

We have successfully negotiated 39 commercial deals for our NHS Trust members which have so far generated just over £120K of commercial income. Some analysis we had done by York Health Economics on the wider impact of two of the commercialised deals indicated that, for EPAQ, if this were to be taken up by NHS and assuming it were 10% effective it would save 15,000 unnecessary outpatient visits and reduce the number of Do Not Attends which is one of the biggest uncontrolled costs to the NHS. If the motorised drip stand were taken up it is estimated to make a £2M saving to the NHS as well as ensuring compliance with manual handling policy.

There were no further spin out companies established during 2008/09 partly as a direct consequence of the economic down turn and the almost complete absence of any early stage (pre commercial) investment funds meant that it was impossible to bring forward business plans seeking money (£250K to £1 M). All 5 healthcare spin out businesses previously established were still viable, two were trading and the remainder were involved in pre commercial development work.

Deal Flow by Year

Year	2003/04	2004/05	2005/06	2006/07	2007/08	2008/09	Totals
New innovations identified	22	211	158	144	143	142	820
Innovations registered on database (Stage 1)	22	50	43	62	113	85	375
Research projects	0	3	2	4	16	26	51
Active projects at year end	2	2	2	6	16	38	66
Commercial Deals	2	2	7	9	9	10	39

Innovation Competition

The annual competition was opened up to include academics and companies working with the NHS and by the end of February 68 entries were received of which nearly 50% were in the Medical Devices/Diagnostics category whereas in previous years the majority of applications had been in Publications and Training materials. We would like to thank the generosity of the sponsors which allowed us to increase prize money by 20% to £10K. Longer term business development opportunities for Medipex should arise from links with several sponsors such as UDL patent agents and Access to Finance and we already have a good relationship with our RDA, Yorkshire Forward.

The big winners on the night were a blood testing tool to accelerate the identification of antibiotics for treatment of patients with MRSA, the “dignity” mobile bidet dryer commode, resources which allow staff to communicate better with children who have learning difficulties and a training simulator to improve the training of staff in radiology and x-ray procedures.

Blood Testing Tool



Tom Darton and his team received their prize for the work they had done developing a new blood screening test which helps to cut down the time in identifying those antibiotics which can be used to treat patients with MRSA from more than 24 hours to just 4 hours. The test, which could be easily adopted by other NHS Trusts has the potential to save costs by reducing the use of broad-spectrum antibiotics such as meropenem, shorten hospital stays and prevent side-effects from these broad-spectrum antibiotics.

The “Dignity” mobile bidet/dryer commode



The “Dignity” mobile bidet / dryer commode is the concept of **Andy Speechley**, a member of the public who developed the device to help a friend who had suffered a stroke, and, as a side effect, suffered from incontinence. Andy has been working with Avril McCarthy and the Devices for Dignity team at Sheffield Teaching Hospitals to develop the idea further and has received recognition for this idea from a wide range of people.

The device is a mobile bidet / dryer commode for the disabled and elderly who are unable to clean themselves satisfactorily after using the toilet. It has a built-in washer and dryer function which can be controlled by the user or by a carer and the device can be moved from room to room. Potentially, the device has real benefits for both patients and carers as it improves a patient’s quality of life and decreases the amount of unpleasant tasks that a carer has to perform.

Clinical Mapping

The combined clinical expertise database, ACTNoW (www.actnow-database.co.uk) now includes coverage across most of the North of England. The purpose of ACTNoW is to create a business friendly interface for healthcare companies interested in contacting the NHS to seek clinical expertise, use of facilities and clinical trials for medical devices and diagnostics. The service Medipex provides in support of ACTNoW links in effectively with the Comprehensive Local research Networks (CLRN) and the topic specific Research Networks in order to better direct companies in to the network and to help those early stage medical technology companies with very little experience of working with the NHS to navigate through the maze.

Financial Summary

During 2008/09 grant funding from Department of Health (DH) and DIUS (Public Sector Research Exploitation) continued to be the main source of income.

Turnover for the year was £885,660, up by £160K over the previous year. After salary costs the major expenditure was for project support costs (£125K) which included patent fees, market research and prototype development fees. Core funding of £508K was received from DH, a further £85K from PSRE 3 funds with the balance drawn from our external income.

DH funds are administered via the National Innovation Centre who provide a coordination and reporting role between the 9 Innovation Hubs plus Adoption Hub and Training Hub and DH. The following statement is an acknowledgement of this support "MEDIPEX has benefited from funding from the NHS Institute for Innovation & Improvement's National Innovation Centre. The views expressed in this publication are those of the authors and not necessarily those of the NHS Institute for Innovation & Improvement's National Innovation Centre."

The company reported a small surplus on the year of £14K associated with interest earned net of corporation tax.

Active Projects and Commercial Deals During 2008/09

Commercial Deals		
Cancer Care Schedule	Scheduling software which ensures chemotherapy patients are treated with minimal waiting times that the department works at optimum efficiency	Licence deal
FFC Model	A training course based on the "Functional Model of Delegation" which allows the training of staff in how to delegate core tasks to assistants to a specific level thus improving the service and efficiency of the department.	Direct sale via e-commerce website
Bowel cancer DVD	Bowel cancer surgery patient information film	Direct sale via e-commerce website
DFOR (Hardware)	Devices to indicate positional and spatial orientation on X-ray images	Licence deal
Fighting Fatigue	A practical guide to managing the symptoms of CFS.	Licence deal
BioMed Book	State of the art review of catheters and associated urology equipment.	Licence deal
Friendship Pack	A teaching aid developed by a Nurse employed at the trust to teach children about friendship	Licence deal
E-Learning Asepsis	E-learning guide to teach nurses and allied healthcare professionals about asepsis techniques.	Licence deal
E-Learning Catheterisation	E-learning guide on effective techniques for catheterisation	Licence deal
Bug Run	Training kit promoting need for hand hygiene	Direct sale via e-commerce website

Active Projects

Name	Description	NHS Trust
Dental Ultrasound Device	An ultrasound device (including transducer) which allows for the measurement of the thickness and elasticity of the oral mucosa	Royal Hallamshire Hospital
Improved Brain Shunt	An idea to improve performance of brain shunts to assist removal of fluid produced by brain tissue. Aims to incorporate an improvement to fluid movement and overcome shortcomings of existing systems.	Leeds Teaching Hospitals NHS Trust
Mole meter	A self check guide for checking moles 'moleometer' to help people identify potential malignant moles. Guide is a disc with a visual scale for size, colour etc. Scores for each category are calculated and over a certain score advises people to visit their GP	Leeds Teaching Hospitals NHS Trust
Medicine Management Team Database	This database allows medicine management staff to record all changes they have made to patients. The database calculates prescribing costs and savings that result from the changes. The system creates the evidence base that supports the strategic and operational processes	NHS Sheffield (formerly Sheffield Primary Care Trust)
Dewsbury Feeding & Swallowing Screen	A new feeding and swallowing screen for nurses.	NHS Kirklees
HODS Management System	A haemato-oncology diagnostic reporting tool to automatically collect results from all haematology tests undertaken for each patient to improve the speed of diagnosis	Royal Hallamshire Hospital
TELEHEALTH	TV Based video telephony platform for assisted living and tele-health.	Airedale NHS Trust

Dynamic orthosis for lower limbs	This project is assessing clinical effectiveness of FES for treatment of dropped foot	Royal Hallamshire Hospital
Challenging behaviour in dementia	Developing a web based decision support system for challenging behaviour in dementia.	Humber Mental Health Teaching NHS Trust
Radiotherapy QA software	QA software developed to measure image sharpness and to test geometric alignment of an image guided radiotherapy system. To be used with the commercially available pentaguide phantom.	Leeds Teaching Hospitals NHS Trust
Biomarker for peripheral arterial disease	NMR spectroscopic analysis of plasma and subsequent multivariate statistical analysis has revealed a biomarker for peripheral arterial disease.	Leeds Teaching Hospitals NHS Trust
Bradford Blades	A new design of obstetric forceps which allows pressure to be sensed.	Hull & East Yorkshire Hospitals NHS Trust
E-learning Medicine Management package	e-learning package for medicines management training.	Meanwood Park
Bombardier Beetle	Bio-mimic of the Bombardier beetle as a potential drug inhaler device.	Leeds Teaching Hospitals NHS Trust
Circulatory Disorder Hand Device	A motorised negative pressure vacuum device for hands to treat various impaired circulatory disorders e.g. Raynaud's disease and Scleroderma.	Royal Hallamshire Hospital
Older Menes' Mini Manual	Copyright enquiry. LPFT is working with the Menes Health Forum and identified a publication gap for men over 65.	Meanwood Park
Mobile Intra abdominal Robotic Surgical Device	A miniaturised mobile device capable of adherence to the abdominal cavity for use in minimal invasive surgery.	Leeds Teaching Hospitals NHS Trust
Single Handed Syringe driver	A finger tip controlled syringe driver allowing one handed injections during medical procedures especially in anaesthesia.	Leeds Teaching Hospitals NHS Trust
Evaluation of Cefotaxime Pharmacokinetics	Non patient study using haemofiltration circuits used in children to generate a computer model to ascertain a suitable dosing regime for children.	Sheffield Children's NHS Foundation Trust
KICK OFF	Kids In Control Of Food. Multi-centre, randomised controlled trial comparing new structured education course with standard care in 11-16 years with Type 1 Diabetes on intensive insulin therapy.	Sheffield Children's NHS Foundation Trust
Metals and FOXP3	Immunological research relating to inflammatory bowel disease. Variations in metal ion concentrations in human immune cells relationship to cell phenotype & FOXP3 expression.	Sheffield Children's NHS Foundation Trust
Osteogenesis Imperfecta Assessment Tool	Osteogenesis Imperfecta assessment tool to promote better treatment and management of patients and reduce need for multiple assessments as the tool collects all data required.	Sheffield Children's NHS Foundation Trust
Wheelchair Cushion	Idea for a new pressure cushion for wheelchair users. Inventor disclosed the idea to STM Healthcare who may look into developing a prototype.	Northern General Hospital
Management system - Haemodialysis	Developed a new proactive management system to monitor renal anaemia in patients undergoing haemodialysis to ensure patients are maintained in a steady state	Leeds Teaching Hospitals NHS Trust

Update on new Healthcare Businesses we have helped to set up.

Zilico Ltd



Sheffield Teaching Hospitals NHS Foundation Trust and the University of Sheffield have developed a unique diagnostic probe that provides an efficient and instantaneous method of diagnosing pre-cancerous cells. Zilico Ltd was established in 2006 by Medipex to take forward this technology to produce the next generation of cancer diagnostics. Clinical data¹ on 500 women has demonstrated superior performance over existing smear test and diagnosis procedures and a multi-centre clinical trial over the next 8 months is expected to underwrite the effectiveness of Zilico's technology and products.

APX100, Zilico's first product, will enable colposcopists to better target biopsy sites thereby reducing the number of diagnostic biopsies and avoiding the gross over-treatment of mild abnormalities. We estimate a target market, which is mainly in the developed world, of 13 million referrals annually.

APX 200, Zilico's second product, is targeted at the very large cervical screening market where we estimate a global available market of 500 million tests each year. This product will provide a real-time diagnosis at the primary point-of-care thus reducing the significant traffic in the healthcare system between primary care, cytology laboratories and colposcopy clinics - and resulting in a more effective application of limited healthcare resources.

Key Highlights

- APX 100, launch in 2010 with colposcopy sales of £8M by 2013
- APX 200, screening target market is 500M women annually
- Projected combined sales of APX 100 & 200 is £12M by 2013
- Management drawn from industry to complement founders
- Initial studies carried out on 500 women; peer reviewed papers
- Two patent applications held (national phase)

EPAQ Systems Ltd

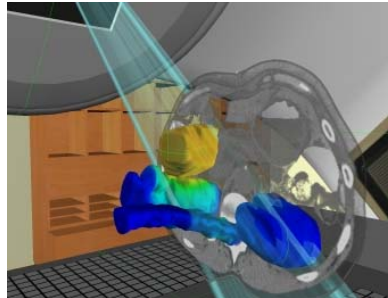
A common way of initially assessing GU patients is through the use of paper-based questionnaires, but these can often take time to complete and generate large amounts of paperwork which are difficult to store. Going through questionnaires verbally with a health professional may also cause embarrassment if the questions are of a highly personal nature. The e-PAQ (Electronic Personal Assessment Questionnaire) software has been developed at Sheffield Teaching Hospitals over a period of 6 years. Extensive clinical trials of the first e-PAQ for assessing Pelvic Floor disorders in women (e-PAQ pelvic floor) were conducted at 5 hospital sites and the product is now commercially available through a new company, EPAQ Systems Ltd that includes the inventor, the Trust, a software development company and Medipex as joint partners.

In addition to the pelvic floor product, EPAQ recently received funding from SHA and PCT to develop other electronic questionnaires including obesity, preoperative assessment and female health. A recent independent economic assessment of EPAQ pelvic floor indicated that if every GU clinic were to adopt EPAQ it would avoid 15,000 unnecessary outpatient visits every year (10% effectiveness).

Vertual Limited



VERT is a virtual environment of a radiotherapy treatment room. Through captivating visualizations with a virtual room that is life size and seen in 3D, VERT offers an excellent platform for supplying training radiotherapy to students, nurses and existing staff. A national programme funded by the Department of Health is providing VERT to all radiotherapy training centres in England.



Vertual Ltd is a collaboration between The University of Hull and Hull & East Yorkshire Hospitals NHS Trust including the 3 inventors.

VERT has been specifically designed as a learning and skills training tool. It has numerous facilities making learning more effective and enjoyable for students including:

- Exquisite realistic graphics within VERT enhance the understanding of those radiotherapy concepts that are often difficult to teach in a classroom setting (iso-centre, IMRT, IGRT, dose distributions).
- VERT enables hands-on experience of patient set-up using skin-marks, IGRT techniques and skin apposition treatments. The virtual Linac is controlled using an actual hand-pendant and you can walk around the virtual treatment room as if it was real!
- Radiotherapy treatment plans created by trainees can be loaded into VERT for them to visualize and simulate their treatment plans.
- VERT loads any radiotherapy treatment plan (in DICOM RT), thereby allowing a vast range of simple and complex treatment plans to be used for training.

The product has been universally acclaimed and is now starting to be sold across USA and the EU.

Leeds Reproductive Bioscience Ltd (LRB)

LRB was established in 2006 and was founded on intellectual property licensed from the University of Leeds (Perinatal Research) and Leeds Teaching Hospital (assisted conception unit). The IP covers novel biomarkers that can correlate oocyte (egg) viability with a successful pregnancy outcome.

For IVF treatment multiple oocytes are harvested and fertilised (but not implanted), but it is difficult to determine when implanted, which is most likely to lead to a pregnancy. This LRB technique has the potential to improve outcomes of IVF and reduce the need for multiple embryo transfers. This application has been validated in a retrospective study of 456 IVF treatments.

The company is developing this validated test on to a commercially appropriate and viable platform and applying this to a prospective study.

Imagel Limited

Imagel Ltd is a spin out from York University involving Hull & East Yorkshire NHS Trust, University of Hull, Techtran Ltd and Medipex Ltd. The first CE marked product is a dosimeter to assist radiotherapists in an independent safety check on the appropriate dose for applications of intensity modulated radiotherapy (IMRT).

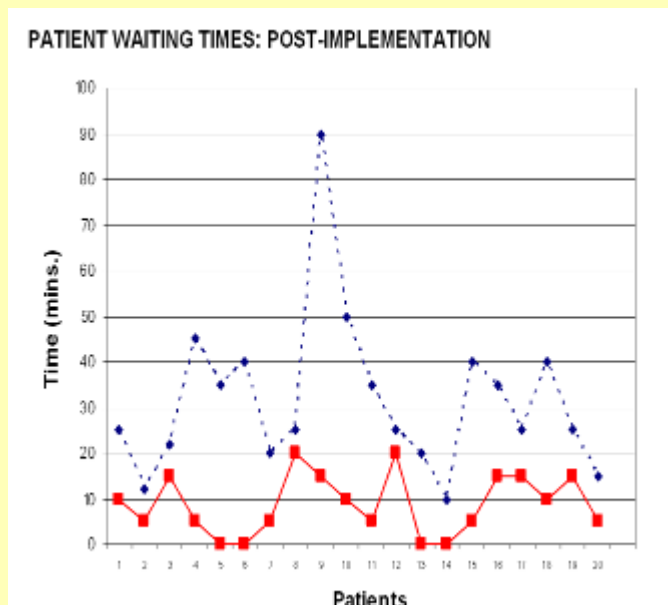
IMRT is an advanced method of high-precision radiotherapy utilising powerful computer-controlled very powerful X-ray machines to deliver precise radiation doses to a specific area within the body. The radiation conforms to the exact tumour shape allowing much higher radiation doses to be administered while minimizing damage to the surrounding healthy tissue.

The production of a suitable gel and the subsequent imaging of the radiated gel dosimeters has been perfected by the team.

Success Stories

Chemotherapy Unit Scheduling System

Pressures on chemotherapy delivery units for treatment are increasing as cancer incidences rise and more treatments become available. The scheduling of patients treatments to ensure that the cancer unit occupancy is maximised, reducing waiting times and ensuring safe delivery of chemotherapeutic drugs whilst not overworking nurses is extremely difficult. Carrie Ross, the former lead chemotherapy nurse at Harrogate and District NHS Foundation Trust addressed these problems by researching and devising a “lean” scheduling methodology for use in the Macmillan Dales Unit. The system had a dramatic effect on working practices and the overall efficiency of the unit.



The Chemotherapy Unit Scheduling System has now been successfully licensed to the software company, Virtual Purple Professional Services Ltd who have worked closely with the inventor to develop an electronic version of the system that is now available on the market. The electronic version allows full courses of patient treatments to be booked at the touch of a button, with the system providing a warning when a unit is approaching full capacity. The system features data capture of treatment regimes, waiting times, auditing, staff training, identifies staff shortages and is linked into the pharmacy ensuring drugs can be prepared for when the patient arrives.

It ensures that both the “chair” space in the unit and nurse’s time is optimised allowing staff to provide high quality holistic care to cancer patients.

The BUG RUN

Reducing healthcare associated infections (HCAIs) such as MRSA and *Clostridium difficile* remains a constant challenge within the NHS. Patricia Chislett, a Senior Specialist Infection Control Nurse at NHS Leeds has developed The BUG RUN, a unique and fun educational aid for infection control training. The BUG RUN comprises of a blackout tent and UV light source to visually demonstrate 'whole body contamination' illustrating how the hands, uniform and equipment are all potential sources of infection.



Before an infection control training session the BUG RUN is assembled and UV light sensitive powder is applied to the surface of training materials and literature that participants will come into contact with during the session. The extent of UV powder exposure only becomes evident when participants enter into the BUG RUN under the UV light. Participants will see firsthand how hands and clothing can become contaminated with potential pathogens from contact with the environment, people and equipment.

The BUG RUN provides a fresh approach to reinforcing the importance of correct hand hygiene and the need to use standard precautions policy such as personal protective equipment (PPE) to help prevent HCAIs. Medipex have been involved in the product development of this product and it is now being sold into the NHS via the ennovations website.

Our Members 2008/09

Barnsley Hospital NHS Foundation Trust
Bradford District Care Trust
Bradford Teaching Hospitals NHS Foundation Trust
Calderdale & Huddersfield NHS Foundation Trust
Harrogate and District NHS Foundation Trust
Hull & East Yorkshire Hospitals NHS Trust
Humber Mental Health Teaching NHS Trust
Leeds Partnerships NHS Foundation Trust
Leeds Teaching Hospitals NHS Trust
NHS Barnsley
NHS Bradford & Airedale
NHS East Riding of Yorkshire
NHS Hull
NHS Leeds

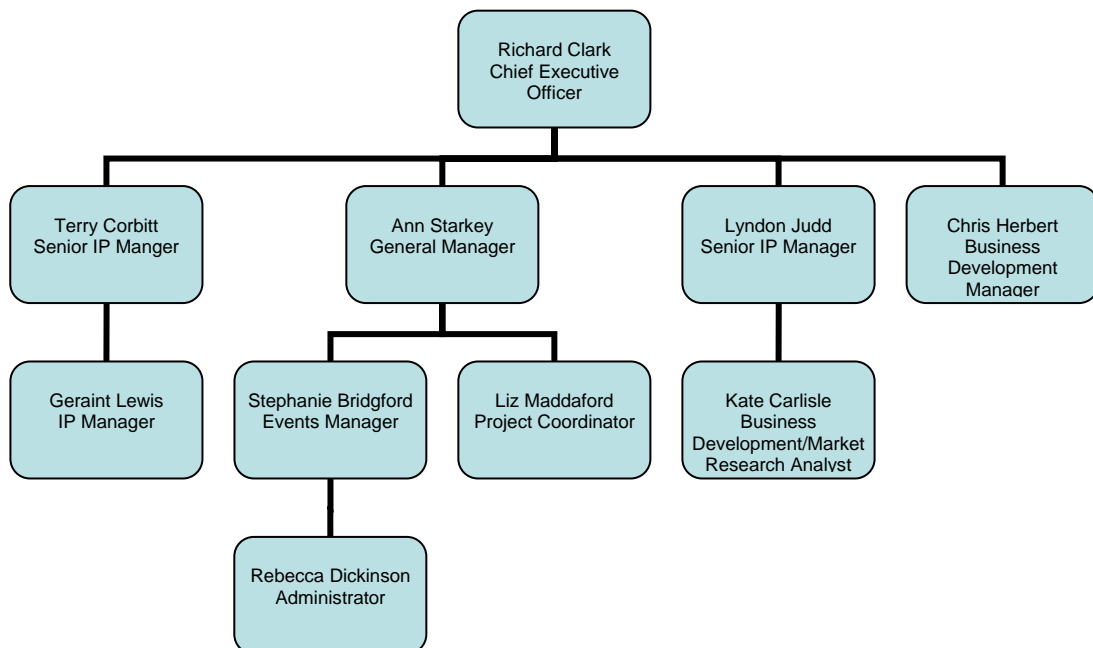
NHS Sheffield
NHS Wakefield District
NHS Yorkshire and the Humber (Strategic Health Authority)
North East Lincolnshire Care Trust Plus
Rotherham, Doncaster & South Humber Mental
Health NHS Foundation Trust
Rotherham Primary Care Trust
Scarborough & North East Yorkshire Healthcare NHS Trust
Sheffield Children's NHS Foundation Trust
Sheffield Health & Social Care NHS Foundation Trust
Sheffield Teaching Hospitals NHS Foundation Trust
South West Yorkshire Partnership NHS Foundation Trust
Yorkshire Ambulance Service NHS Trust
York Hospitals NHS Foundation Trust

Board Membership 2008/09

During the year several board members stepped down due to changes in their day job and were replaced, such that the board composition at the end of the year was:

Professor G Lloyd-Jones	Chairman
Dr S Ward	SYBEN Ltd
Mr R Clark	CEO Medipex Ltd
Mr D Dickson	Garbutt & Elliott
Prof Peter Dettmar	Technostics Ltd
Dr Philip Drury	Advisor to DH
Professor M Hawley	Barnsley Hospital NHS Foundation Trust
Professor M Smith	Sheffield Hallam University
Professor Steve Smye replaced Dr Matt Toogood	Leeds Teaching Hospitals NHS Trust
Mr C Linacre	Sheffield Teaching Hospital NHS Foundation Trust
Professor P O'Donovan	Bradford Teaching Hospital NHS Foundation Trust
Professor John Hutton	York Hospital NHS Foundation Trust
Dr Sue Proctor	NHS Yorkshire & Humber
Mrs Ann Starkey	Company Secretary & General Manager Medipex Ltd
Lucy Fountain	Yorkshire Forward

Members of the Medipex team



Medipex Ltd
Icon Business Centre
4100 Park Approach
Leeds, LS15 8GB
Tel: 0113 3970 830
Fax: 0113 3970 450
www.medipex.co.uk